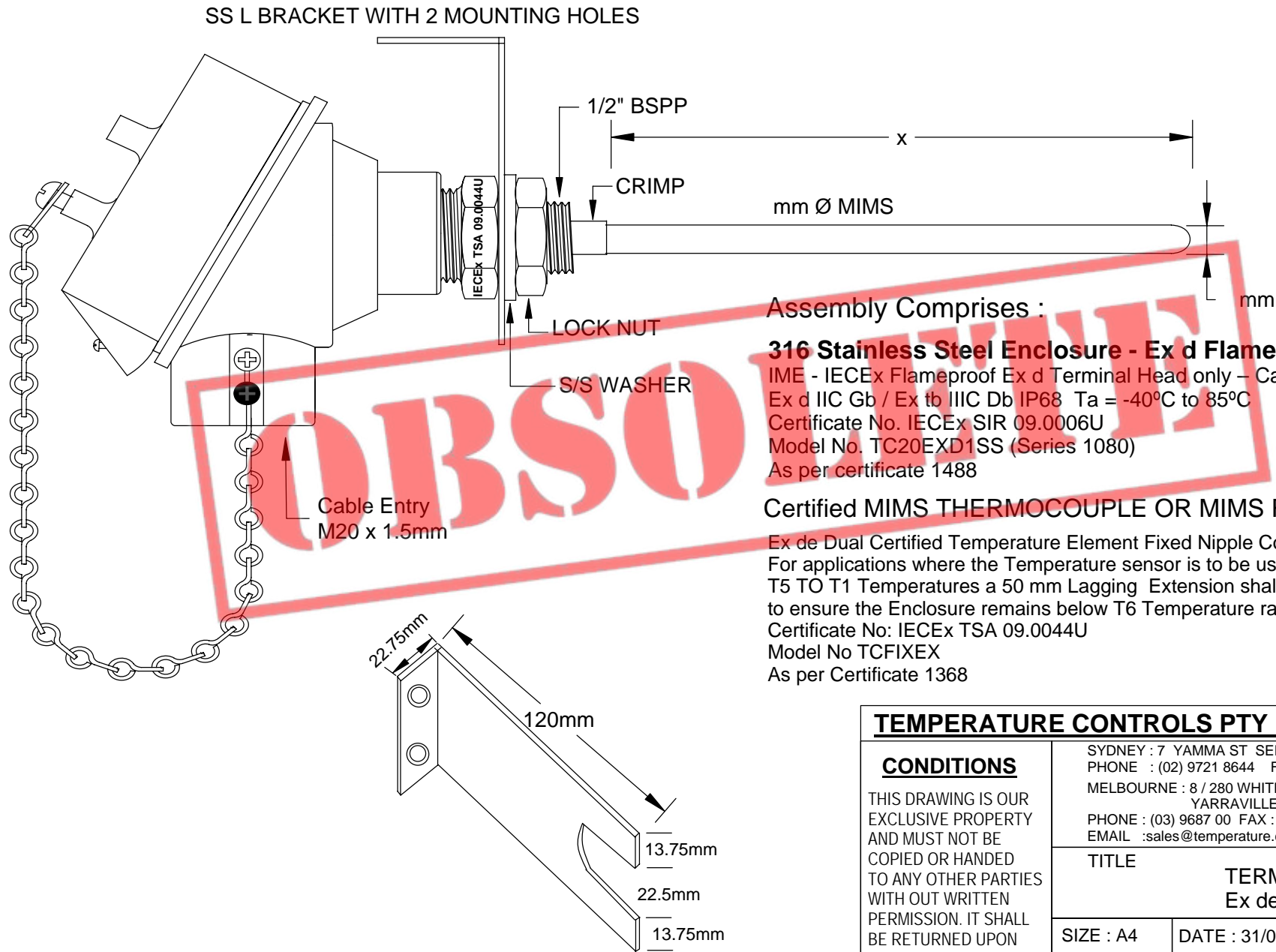


Ex d Flameproof Fixed Temperature Assembly with 316 Stainless Steel Terminal Head



Assembly Comprises :

316 Stainless Steel Enclosure - Ex d Flameproof and DIP dust
 IME - IECEX Flameproof Ex d Terminal Head only – Cable entry M20
 Ex d IIC Gb / Ex tb IIIC Db IP68 Ta = -40°C to 85°C
 Certificate No. IECEX SIR 09.0006U
 Model No. TC20EXD1SS (Series 1080)
 As per certificate 1488

Certified MIMS THERMOCOUPLE OR MIMS RTD Sensor

Ex de Dual Certified Temperature Element Fixed Nipple Connection
 For applications where the Temperature sensor is to be used in
 T5 TO T1 Temperatures a 50 mm Lagging Extension shall be fitted
 to ensure the Enclosure remains below T6 Temperature rating.
 Certificate No: IECEX TSA 09.0044U
 Model No TCFIXEX
 As per Certificate 1368

TEMPERATURE CONTROLS PTY LTD Certificate No: QEC 14412
 ISO 9001:2008

CONDITIONS

THIS DRAWING IS OUR EXCLUSIVE PROPERTY AND MUST NOT BE COPIED OR HANDED TO ANY OTHER PARTIES WITH OUT WRITTEN PERMISSION. IT SHALL BE RETURNED UPON REQUEST

SYDNEY : 7 YAMMA ST SEFTON , NSW 2162
 PHONE : (02) 9721 8644 FAX : (02) 9738 9339
 MELBOURNE : 8 / 280 WHITEHALL ST
 YARRAVILLE VIC 3013
 PHONE : (03) 9687 00 FAX : (03) 9687 1900
 EMAIL : sales@temperature.com.au



TITLE
**TERMINAL HEAD C/W
 Ex de FIXED ELEMENT**

SIZE : A4	DATE : 31/01/12	DWG NO : SD 748
SCALE : NTS	DRAWING BY R.B	REV : 02